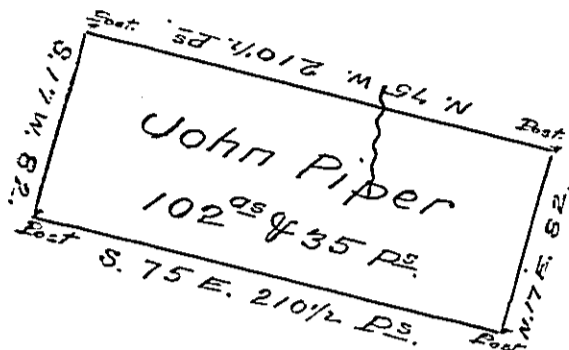


George Elder.



John Piper's Land.

A Draught of a Tract of Land Situate on a Place call'd the Flag Meadow in Providence Township Bedford County Containing one Hundred and Two Acres and Thirty five perches with the usual allowance of Six PE Cent for Roads &c Surveyed for John Piper the 29th Day of June 1787 In Pursuance of a Warrant Dated December 10th 1767.

George Woods U.S.

To John Lukens Esq. S. G.

N.B. This Tract Enters with Mr. Daugherty's old Survey Called the Flag Meadow and Disputed.

George Woods.

IN TESTIMONY that the above is a copy of the original remaining on file in the Department of Internal Affairs of Pennsylvania, made conformably to an Act of Assembly approved the 16th day of February, 1833, I have hereunto set my Hand and caused the Seal of said Department to be affixed at Harrisburg, this SECOND day of JUNE 1906.

Samuel S. Pomeroy
Secretary of Internal Affairs.